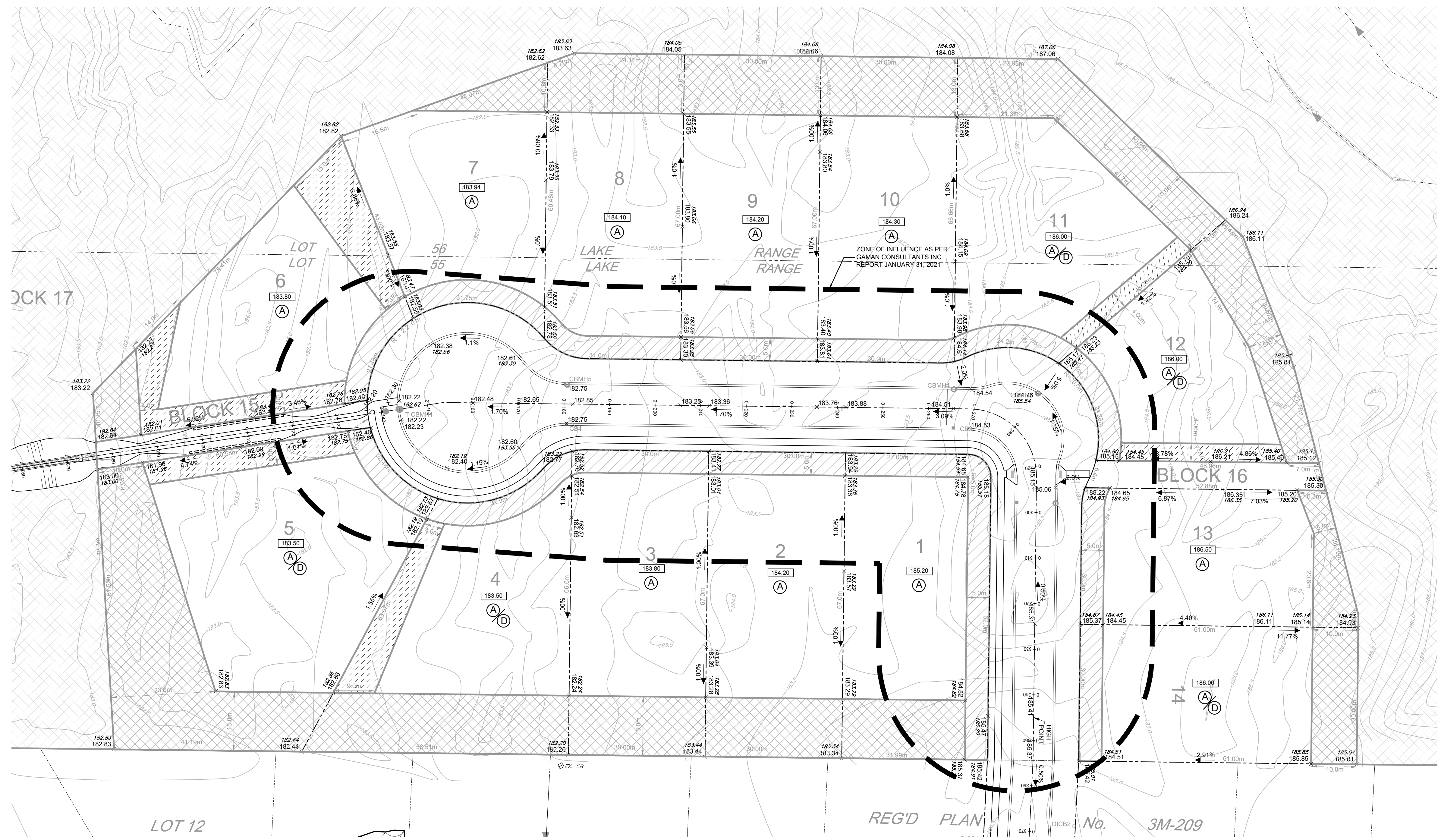
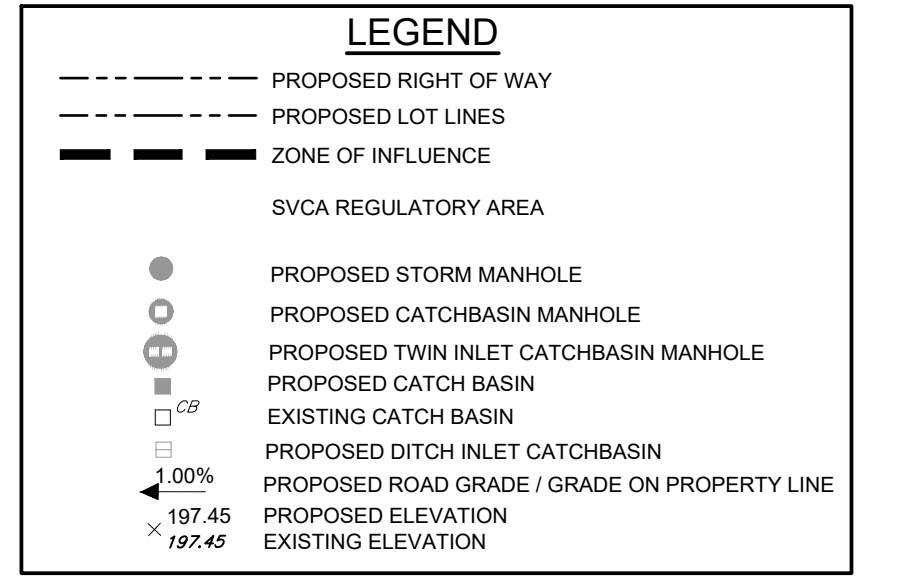


CAUTION:
THE POSITION OF POLE LINES, CONDUITS, WATERMANS, SEWERS AND OTHER UNDERGROUND AND OVERGROUND UTILITIES AND STRUCTURES IS NOT NECESSARILY SHOWN ON THE DRAWINGS, AND, WHERE SHOWN, THE ACCURACY OF THE POSITION OF SUCH UTILITIES AND STRUCTURES IS NOT GUARANTEED. BEFORE STARTING WORK, THE CONTRACTOR SHALL INFORM THEMSELVES OF THE EXACT LOCATION OF ALL SUCH UTILITIES AND STRUCTURES, AND SHALL ASSUME ALL LIABILITY FOR DAMAGE TO THEM.

- Notes**
1. TOPOGRAPHIC INFORMATION DERIVED FROM FIELD SURVEYS BY PSMI COMPLETED IN 2005, 2006 & 2009 AND COBIDE ENGINEERING INC. IN DECEMBER 2020.
 2. SEE SHEET C7 FOR TYPICAL ROAD CROSS SECTIONS AND PAVEMENT DESIGN.
 3. ALL ORGANIC MATERIAL WITHIN 1.2m OF FINISHED PROFILE GRADE TO BE REMOVED FROM ALL AREAS UNDER THE TRAVELLED PORTION OF THE ROAD.
 4. COVER OVER WATERMAIN 1.5m MINIMUM AT ALL POINTS.
 5. STORM SEWERS 900mmØ AND SMALLER TO BE PERFORATED HDPE IN 50mmØ WASHED CLEAR STONE WRAPPED IN NON-WOVEN GEOTEXTILE EXCEPT 3m ENTERING AND EXITING STORM STRUCTURES WHICH IS TO BE SOLID PIPE. SEE DETAIL SHEET 00104-C7.
 6. ALL STORM CATCHBASINS TO HAVE A MINIMUM SUMP OF 600mm AND ALL STORM MANHOLES TO HAVE A MINIMUM SUMP OF 600mm.
 7. MAINTAIN 2.50m CLEARANCE BETWEEN STORM SEWER AND WATERMAIN.
 8. ALL WATERMANS TO BE PVC-DR 18 WITH 20mmØ REHAU MUNICIPEX SERVICE TUBING FOR WATER SERVICES.
 9. WATER SERVICES TO BE INSTALLED UNDER STORM SEWERS.
 10. ALL HYDRANT SETS REQUIRE TEST POINT AND HYDRANT MARKER.
 11. THIS DRAWING IS NOT TO BE USED FOR CONSTRUCTION PURPOSES UNTIL STAMPED ISSUED FOR CONSTRUCTION.
 12. ALL CONSTRUCTION TO BE COMPLETED TO TOWN OF SAUGEEN SHORES ENGINEERING STANDARDS.
 13. ALL EAVESTROUGHS ARE TO BE DIRECTED TO THE REAR YARDS TO ALLOW FOR INFILTRATION.
 14. COBIDE ENGINEERING INC. ASSUMES NO RESPONSIBILITY FOR BASEMENT CONDITIONS DUE TO GROUNDWATERS.



Benchmark Information

BM1 TOP NUT OF FIRE HYDRANT LOCATED ON THE SOUTH SIDE OF CARTER DRIVE. ELEVATION 186.53m

No.	DATE	DESCRIPTION	BY	APPD
4	AUG 22/22	SVCA SUBMISSION	ARMH	SJC
3	JULY 13/22	ISSUED FOR TENDER	ARMH	SJC
2	JUNE 21/22	MECP SUBMISSION	ARMH	SJC
1	MAR 15/22	SECOND SUBMISSION	TLB	SJC
0	SEPT 30/21	PRELIMINARY SUBMISSION	TLB	SJC

REVISION / ISSUE



MIRAMICHI SHORES PHASE 4 PROPOSED SUBDIVISION
Town of Saugeen Shores, Ont.
LOT GRADING PLAN

Client: MIRAMICHI SHORES LAND DEVELOPMENT LTD.

Design: TLB Scale: 1:500

Drawn: JAF Approved:

Checked: SJC

Date: JUNE 2021 Design Engineer

DRAWING No. 00104-C4